



East and North Hertfordshire **NHS**
NHS Trust

Our changing hospitals



East Hertfordshire District Council

29 June 2010

Today's agenda

- National review of health service reconfigurations Lister – phases zero to four
 - Infrastructure upgrade
 - Lister Surgicentre
 - Maternity services
 - Multi-storey car park
 - Emergency and inpatient services
- QEII local general hospital
- Foundation trust application update
- 2010/11 – a year of challenge



National review of health service reconfigurations

- **Announced by Secretary of State for Health 21 May 2010**
- **All planned and future service reconfigurations to meet four principles:**
 - Focus on improving patient outcomes
 - Show consideration for patient choice
 - Have the support of GP commissioners
 - Based on sound clinical evidence
- **Further guidance on review process imminent**



What does it mean for the Trust?

- An expected development – trailed widely
- Welcome opportunity to engage with Government's new health regime
- Covers acute services changes and PCT's LGH plans
 - major focus likely to be on LGH
- Lister Surgicentre, maternity expansion and multi-storey car park projects on track



Lister phase one: Lister Surgicentre

- Clinicenta private sector NHS partner
- Financial close reached April 2009
- Construction under well way
- Opening April 2011
- All day and orthopaedic short stay (c.50% of QEII's planned surgery)



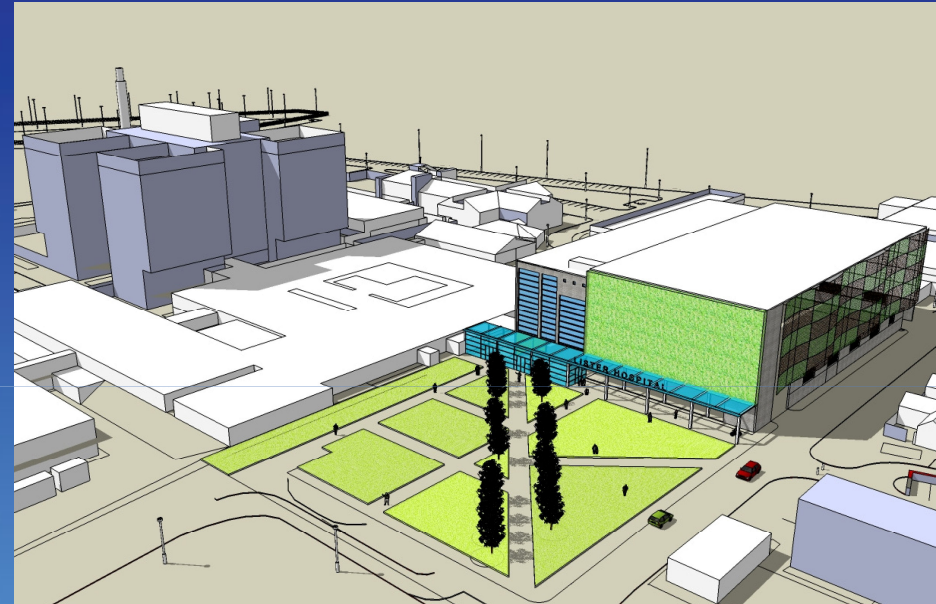
Lister phase two: maternity services

- End-2010 – existing Lister service moves in to new building
- Mid-2011 – refurbishment of former Lister maternity unit completed
- October 2011 – whole unit ready for occupation, including service moved up from QEII



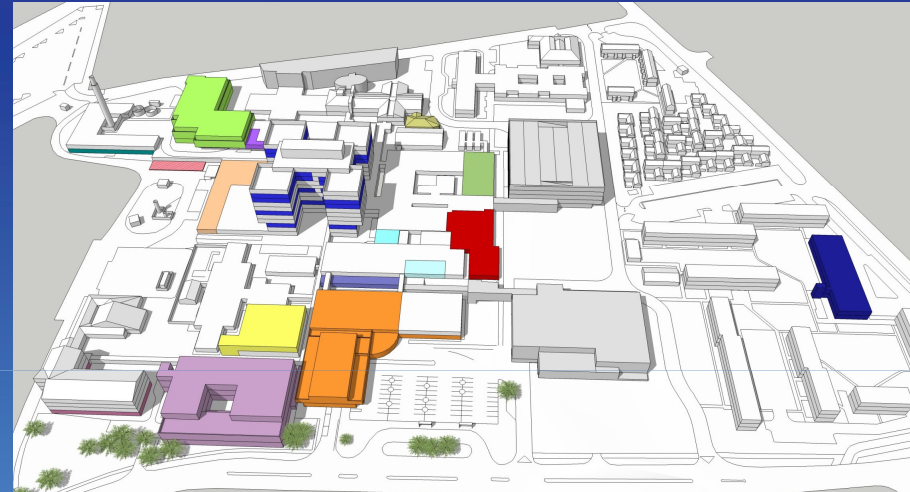
Lister phase three: car parking

- Lister will need 2,000+ spaces
- Up by around 800 from today
- Only solution is multi-storey car park
- Successful tender appointed
- Work starts later this year
- Completed 2011



Lister phase four: emergency and inpatient services

- Aim is to ensure emergency department changes delivered 2012 /13
- Changes to elective services by 2013/14
- Refurbishment and upgrading of remaining clinical areas addressed via Trust's capital programme 2014 onwards



QEI local general hospital (LGH)



Foundation trust application

- **Process now well underway**
- **Nearly 6,800 public members recruited already**
- **Remaining timetable:**
 - **March 2010** – formal application to SHA
 - **Summer 2010** – Health Secretary approves move to Monitor's formal assessment process
 - **Autumn/Winter 2010** – Monitor assessment
 - **Early 2011** – Monitor approves for foundation trust authorisation



2010/11 – a year of challenge

- PCT planning to reduce referrals:
 - Elective inpatients ▼4%
 - Elective day cases ▼16%
 - First outpatient attendances ▼6%
 - Follow-up attendances ▼4%
- Real reduction in income, plus requirement to deliver £3.3 million surplus (1% of turnover)

